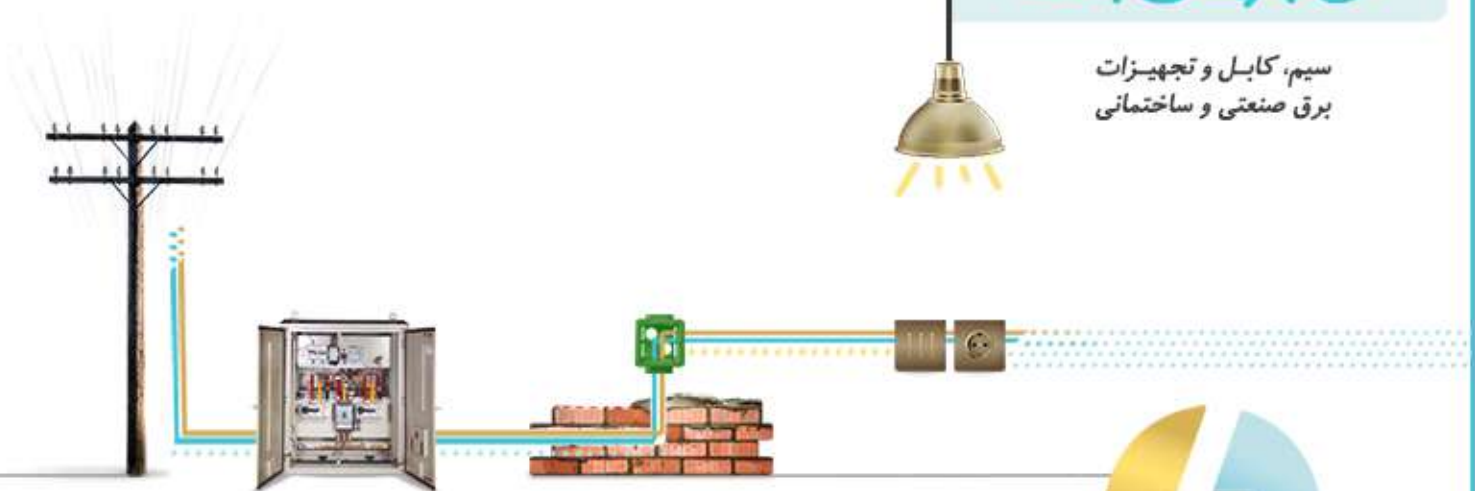


# برق و صنعت سروین

کل جریان با ما

سیم، کابل و تجهیزات  
برق صنعتی و ساختمانی



- ☎ ۰۲۱-۹۱۰ ۱۵ ۳۳۳ | ۰۲۱-۶۶ ۳۴۴۰ ۹۵
- 📍 دفتر مرکزی: تهران . لاله‌زار شمالی. پاساژ ایرانیان. طبقه دوم. واحد ۱۲۲
- ☎ ۰۸۶-۹۱۰ ۱۵ ۳۳۳
- 📍 اراک. خیابان شهید بهشتی. خیابان عضد. نبش عضد یک



w w w . b a r g h z o o m . c o m



# PIPE ARIAN®

[www.eai-co.com](http://www.eai-co.com) / [eaindustry@yahoo.com](mailto:eaindustry@yahoo.com)

کل جریان با م



[www.barghzoom.com](http://www.barghzoom.com)



**ELECTRICAL STEEL CONDUIT**

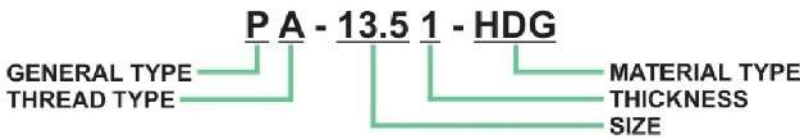
The strength and greater longevity and better protection of cables and wires, operation of wiring and cabling in buildings and industrial plants and factories need to feel the electrical of steel pipes, which can either flush or superficies steel piping done.

Electro arian industry, electrical steel pipes according to world standards (ASTM A500-DIN EN 10240-DIN 2394-DIN 2440) and with exclusive brands (**PIPE ARIAN**) to produse.

The pipes are produced in three types of thread (PG - NPT,BSPT - ISO METRIC) and these three types of hot galvanized (HDG) pipes and galvanized cold (CG) furnace black color (BC) is produced.

Electrical steel pipes is made of steel sheet st37 and st12 grade.

## ORDERED BY CATALOG NUMBER



## SPECIFICATIONS

### GENERAL TYPE :

P = Pipe (conduit)

### THREAD TYPE :

A = PG  
B = NPT,BSPT  
C = ISO METRIC

### SIZE :

PG : 11 - 13.5 - 16 - 21 - 29 - 36 - 48  
NPT,BSPT : 1/2" - 3/4" - 1" - 1 1/4" - 1 1/2" - 2" - 2 1/2" - 3" - 4" - 5"  
ISO METRIC : 20mm - 25mm - 32mm - 40mm - 50mm - 63mm

### THICKNESS :

T (PG) = 0.8mm-0.9mm-1mm-1.25mm-1.5mm  
T (NPT) = 2mm-2.5mm-3mm-4mm-5mm  
T (ISO METRIC) = 1.25mm-1.5mm-2mm-2.5mm-3mm-4mm

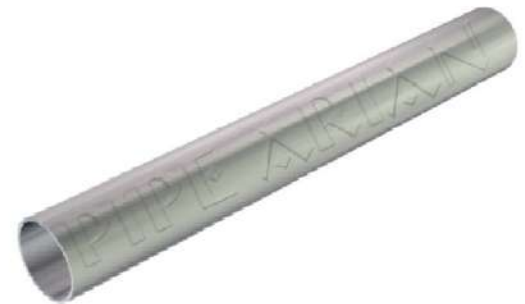
### MATERIAL TYPE :

HDG = Hot dip galvanized  
CG = Cold galvanized  
BC = Black color

## MATERIAL TYPE



HDG = Hot dip galvanized



CG = Cold galvanized



BC = Black color

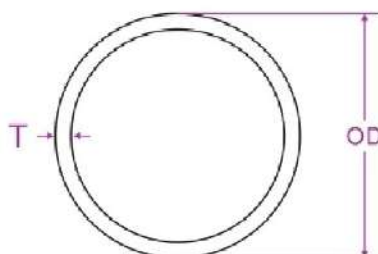


### 1- Electrical steel conduit

**NOTE:**

1. (?) --> **HDG: Hot dip galvanized**  
**CG: Cold galvanized**  
**BC: Black color**

2. (A-B-C)--> **A: PG**  
**B: NPT**  
**C: ISO METRIC**



#### PA: (PG)

ORDER CODE	SIZE PG	T mm	OD mm	L mm
PA-11 T-?	11	0.8 - 0.9 - 1	18	3000
PA-13.5 T-?	13.5	0.8 - 0.9 - 1	20	3000
PA-16 T-?	16	0.8 - 0.9 - 1	22	3000
PA-21 T-?	21	0.9 - 1 - 1.25	28	3000
PA-29 T-?	29	1 - 1.25 - 1.5	37	3000
PA-36 T-?	36	1.25 - 1.5	47	3000
PA-48 T-?	48	1.25 - 1.5	60	3000



P(A-B-C)-S T-HDG

#### PB: (NPT-BSPT)

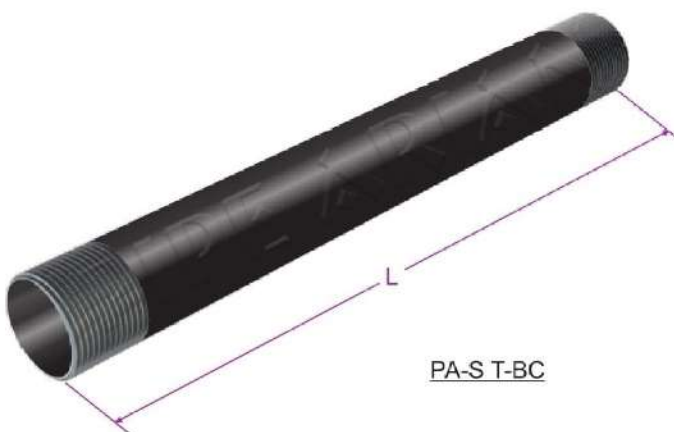
ORDER CODE	SIZE inch	T mm	OD mm	L mm
PB-1/2 T-HDG	1/2"	2	21.34	3000-6000
PB-3/4 T-HDG	3/4"	2 - 2.5	26.67	3000-6000
PB-1 T-HDG	1"	2 - 2.5	33.40	3000-6000
PB-1 1/4 T-HDG	1 1/4"	2 - 2.5	42.16	3000-6000
PB-1 1/2 T-HDG	1 1/2"	2 - 2.5	48.26	3000-6000
PB-2 T-HDG	2"	2 - 2.5	60.33	3000-6000
PB-2 1/2 T-HDG	2 1/2"	2.5	73.03	3000-6000
PB-3 T-HDG	3"	3 - 4	88.90	3000-6000
PB-4 T-HDG	4"	3 - 4	114.3	3000-6000
PB-5 T-HDG	5"	5	141.3	3000-6000



PA-S T-CG

#### PC: (ISO METRIC)

ORDER CODE	SIZE mm	T mm	OD mm	L mm
PC-20 T-HDG	20	1.2-1.5	20	3000-6000
PC-25 T-HDG	25	1.2-1.5	25	3000-6000
PC-32 T-HDG	32	1.2-1.5	32	3000-6000
PC-40 T-HDG	40	1.2-1.5	40	3000-6000
PC-50 T-HDG	50	1.5-2	50	3000-6000
PC-63 T-HDG	63	1.5-2	63	3000-6000
PC-75 T-HDG	75	2-2.5	75	3000-6000
PC-90 T-HDG	90	2.5-3	90	3000-6000
PC-100 T-HDG	100	3-4	100	3000-6000



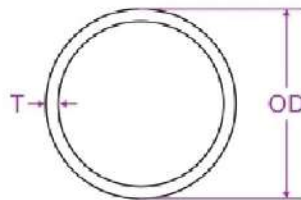
PA-S T-BC

**2- Straight connector or coupling**

**NOTE :**

1. (?) → HDG: Hot dip galvanized  
CG: Cold galvanized

2. (A-B-C) → A: PG  
B: NPT  
C: ISO METRIC



P(A-B-C)2-S-HDG

**PA: (PG)**

ORDER CODE	SIZE PG	T mm	OD mm	L mm
PA 2 - 11 - ?	11	1	20	30
PA 2 - 13.5 - ?	13.5	1	22	30
PA 2 - 16 - ?	16	1	24	30
PA 2 - 21 - ?	21	1	30	35
PA 2 - 29 - ?	29	1.5	40	40
PA 2 - 36 - ?	36	1.5	50	50
PA 2 - 48 - ?	48	1.5	63	60



PA2-S-CG

**PB: (NPT-BSPT)**

ORDER CODE	SIZE inch	T mm	OD mm	L mm
PB2-1/2 T-HDG	1/2"	2.5	25.65	30
PB2-3/4 T-HDG	3/4"	2.5	31.75	30
PB2-1 T-HDG	1"	3	39.5	40
PB2-1 1/4 T-HDG	1 1/4"	3	48	50
PB2-1 1/2 T-HDG	1 1/2"	3.5	55.3	60
PB2-2 T-HDG	2"	4	68.4	60
PB2-2 1/2 T-HDG	2 1/2"	4	81	70
PB2-3 T-HDG	3"	5	99	80
PB2-4 T-HDG	4"	5	124.4	100
PB2-5 T-HDG	5"	5.5	152.4	100



Connection Example

**PC: (ISO METRIC)**

ORDER CODE	SIZE mm	T mm	OD mm	L mm
PC2-20 T-HDG	20	2	24	30
PC2-25 T-HDG	25	2	29	30
PC2-32 T-HDG	32	2.5	37	40
PC2-40 T-HDG	40	2.5	45	40
PC2-50 T-HDG	50	3.5	57	50
PC2-63 T-HDG	63	3.5	70	60
PC2-75 T-HDG	75	5	85	60
PC2-90 T-HDG	90	5	100	70
PC2-100 T-HDG	100	6	112	70



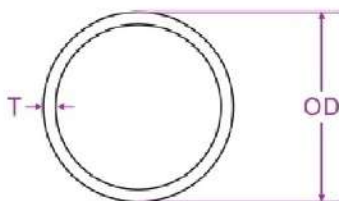


### 3- Steel pipe connection sleeve or fitting

**NOTE :**

1. (?) → HDG: Hot dip galvanized  
CG: Cold galvanized

2. (A-B-C) → A: PG  
B: NPT  
C: ISO METRIC



#### PA: (PG)

ORDER CODE	SIZE PG	T mm	OD mm	L mm
PA 3 - 11 - ?	11	1	20.2	60
PA 3 - 13.5 - ?	13.5	1	22.2	60
PA 3 - 16 - ?	16	1	24.2	60
PA 3 - 21 - ?	21	1.25	30.7	70
PA 3 - 29 - ?	29	1.5	40.2	75
PA 3 - 36 - ?	36	1.5	50.2	90
PA 3 - 48 - ?	48	1.5	63.2	100

#### PB: (NPT-BSPT)

ORDER CODE	SIZE inch	T mm	OD mm	L mm
PB3-1/2 T-HDG	1/2"	2.5	25.85	60
PB3-3/4 T-HDG	3/4"	2.5	31.95	70
PB3-1 T-HDG	1"	3	39.7	75
PB3-1 1/4 T-HDG	1 1/4"	3	48.2	90
PB3-1 1/2 T-HDG	1 1/2"	3.5	55.5	90
PB3-2 T-HDG	2"	4	68.6	100
PB3-2 1/2 T-HDG	2 1/2"	4	81.2	100

#### PC: (ISO METRIC)

ORDER CODE	SIZE mm	T mm	OD mm	L mm
PC3-20 T-HDG	20	1.25	23	60
PC3-25 T-HDG	25	1.25	28	60
PC3-32 T-HDG	32	1.25	35	70
PC3-40 T-HDG	40	1.5	43.5	75
PC3-50 T-HDG	50	1.5	53.5	90
PC3-63 T-HDG	63	1.5	66.5	100



Connection Example



# ELECTRICAL STEEL CONDUIT ACCESSORIES

# PIPE ARIAN®

www.eai-co.com  
eaindustry@yahoo.com

## 4- Conduit bend 90°

### NOTE:

1. (?) → HDG: Hot dip galvanized  
CG: Cold galvanized  
BC: Black color

2. (A-B-C) → A: PG  
B: NPT  
C: ISO METRIC

### PA: (PG)

ORDER CODE	SIZE PG	T mm	OD mm
PA 4 - 11 - ?	11	1	18
PA 4 - 13.5 - ?	13.5	1	20
PA 4 - 16 - ?	16	1	22
PA 4 - 21 - ?	21	1.25	28
PA 4 - 29 - ?	29	1.5	37
PA 4 - 36 - ?	36	1.5	47
PA 4 - 48 - ?	48	2	60

### PB: (NPT-BSPT)

ORDER CODE	SIZE inch	T mm	OD mm
PB4-1/2 T-HDG	1/2"	2	21.34
PB4-3/4 T-HDG	3/4"	2 - 2.5	26.67
PB4-1 T-HDG	1"	2 - 2.5	33.40
PB4-1 1/4 T-HDG	1 1/4"	2 - 2.5	42.16
PB4-1 1/2 T-HDG	1 1/2"	2 - 2.5	48.26
PB4-2 T-HDG	2"	2 - 2.5	60.33
PB4-2 1/2 T-HDG	2 1/2"	2.5	73.03
PB4-3 T-HDG	3"	3 - 4	88.90
PB4-4 T-HDG	4"	3 - 4	114.3
PB4-5 T-HDG	5"	5	141.3

### PC: (ISO METRIC)

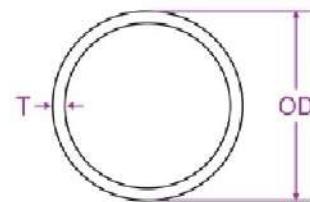
ORDER CODE	SIZE mm	T mm	OD mm
PC4-20 T-HDG	20	1.2-1.5	20
PC4-25 T-HDG	25	1.2-1.5	25
PC4-32 T-HDG	32	1.2-1.5	32
PC4-40 T-HDG	40	1.2-1.5	40
PC4-50 T-HDG	50	1.5-2	50
PC4-63 T-HDG	63	1.5-2	63
PC4-75 T-HDG	75	2-2.5	75
PC4-90 T-HDG	90	2.5-3	90
PC4-100 T-HDG	100	3-4	100



P(A-B-C)4-S T-HDG



PA4-S T-CG



Connection Example

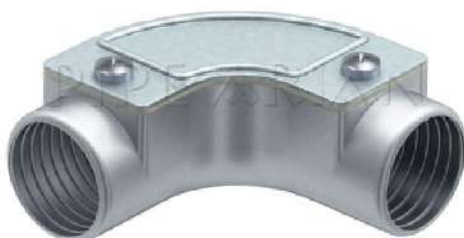


### 5- Bend 90° with cover (PG)

**NOTE:**

1. (AL) --> Aluminium

ORDER CODE	SIZE PG
PA5-11-AL	11
PA5-13.5-AL	13.5
PA5-16-AL	16
PA5-21-AL	21
PA5-29-AL	29



Connection Example

### 6- Tee shaped with cover (PG)

**NOTE:**

1. (AL) --> Aluminium

ORDER CODE	SIZE PG
PA6-11-AL	11
PA6-13.5-AL	13.5
PA6-16-AL	16
PA6-21-AL	21
PA6-29-AL	29



Connection Example

### 7- Spacer fastening clip (PG)

ORDER CODE	SIZE PG
PA 7 - 11	11
PA 7 - 13.5	13.5
PA 7 - 16	16
PA 7 - 21	21
PA 7 - 29	29
PA 7 - 36	36
PA 7 - 48	48



Connection Example



**8- Galvanized clamp without stand**

**PB: (NPT-BSPT)**

ORDER CODE	SIZE inch
PB8-1/2- ?	1/2"
PB8-3/4- ?	3/4"
PB8-1- ?	1"
PB8-1 1/4- ?	1 1/4"
PB8-1 1/2- ?	1 1/2"
PB8-2- ?	2"
PB8-2 1/2- ?	2 1/2"
PB8-3- ?	3"
PB8-4- ?	4"
PB8-5- ?	5"

**PC: (ISO METRIC)**

ORDER CODE	SIZE mm
PC8-20- ?	20
PC8-25- ?	25
PC8-32- ?	32
PC8-40- ?	40
PC8-50- ?	50
PC8-63- ?	63
PC8-75- ?	75
PC8-90- ?	90
PC8-100- ?	100



**NOTE :**

1. (?) --> **HDG: Hot dip galvanized**  
**CG: Cold galvanized**

2.(B-C)--> **B: NPT**  
**C: ISO METRIC**

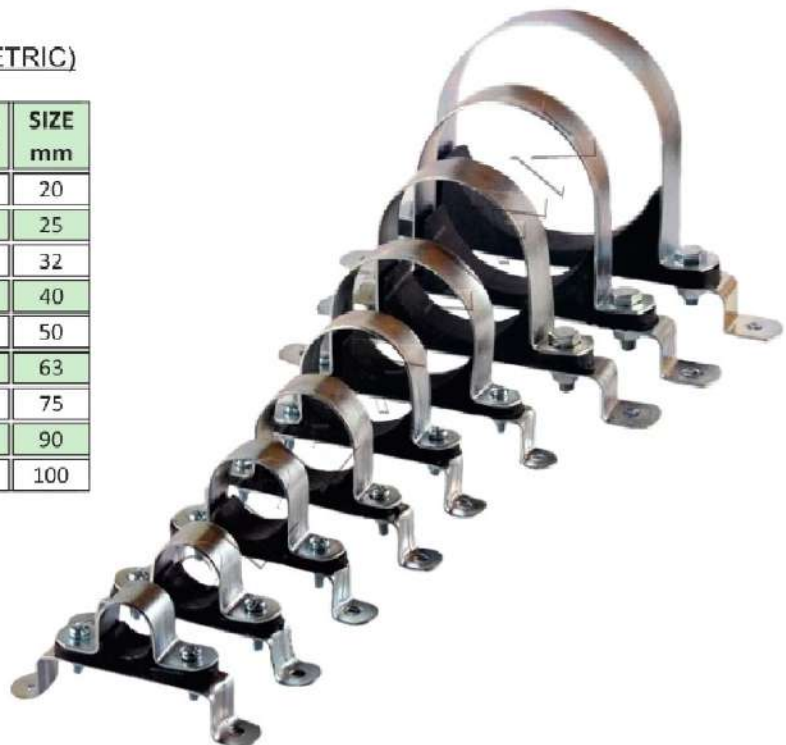
**9- Galvanized clamp with 3cm stand**

**PB: (NPT-BSPT)**

ORDER CODE	SIZE inch
PB9-1/2- ?	1/2"
PB9-3/4- ?	3/4"
PB9-1- ?	1"
PB9-1 1/4- ?	1 1/4"
PB9-1 1/2- ?	1 1/2"
PB9-2- ?	2"
PB9-2 1/2- ?	2 1/2"
PB9-3- ?	3"
PB9-4- ?	4"
PB9-5- ?	5"

**PC: (ISO METRIC)**

ORDER CODE	SIZE mm
PC9-20- ?	20
PC9-25- ?	25
PC9-32- ?	32
PC9-40- ?	40
PC9-50- ?	50
PC9-63- ?	63
PC9-75- ?	75
PC9-90- ?	90
PC9-100- ?	100



**NOTE :**

1. (?) --> **HDG: Hot dip galvanized**  
**CG: Cold galvanized**

2.(B-C)--> **B: NPT**  
**C: ISO METRIC**

### 10- Pipe end cap (Head Bushing)

**NOTE:**

1. (?) -> **Al: Aluminium**  
**P: Plastic**

2. (A-B-C) -> **A: PG**  
**B: NPT**  
**C: ISO METRIC**

PA: (PG)

ORDER CODE	SIZE PG
PA10-11- ?	11
PA10-13.5- ?	13.5
PA10-16- ?	16
PA10-21- ?	21
PA10-29- ?	29
PA10-36- ?	36
PA10-48- ?	48



Aluminium

PB: (NPT-BSPT)

ORDER CODE	SIZE inch
PB10-1/2- ?	1/2"
PB10-3/4- ?	3/4"
PB10-1- ?	1"
PB10-1 1/4- ?	1 1/4"
PB10-1 1/2- ?	1 1/2"
PB10-2- ?	2"
PB10-2 1/2- ?	2 1/2"
PB10-3- ?	3"
PB10-4- ?	4"
PB10-5- ?	5"



Plastic or Polyethylene

PC: (ISO METRIC)

ORDER CODE	SIZE mm
PC10-20- ?	20
PC10-25- ?	25
PC10-32- ?	32
PC10-40- ?	40
PC10-50- ?	50
PC10-63- ?	63
PC10-75- ?	75
PC10-90- ?	90
PC10-100- ?	100



Connection Example



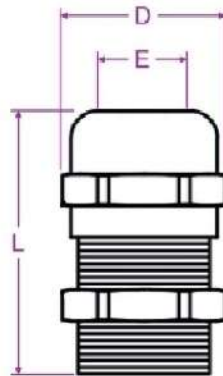
## 11- Cable Gland round head

IP 68

**NOTE:**

1. (?) -> **NB: Nickel-plated Brass**  
**P: Polyamide**

2.(A-B-C)-> **A: PG**  
**B: NPT**  
**C: ISO METRIC**



Metal-Brass



Polyamide

### PA: (PG)

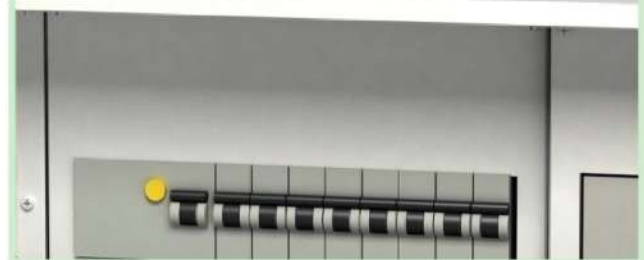
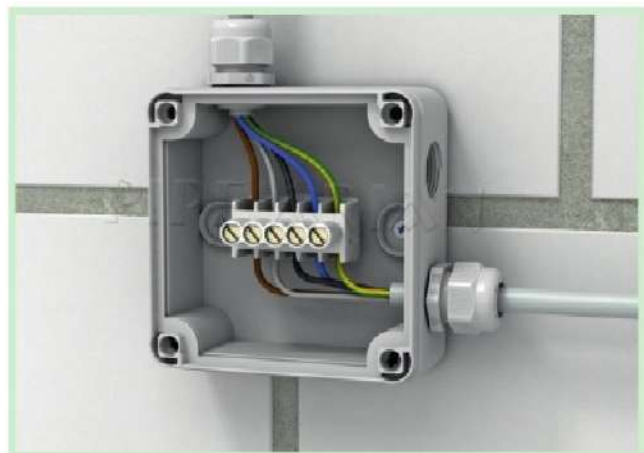
ORDER CODE	SIZE PG	D mm	E mm	L mm
PA11-11-?	11	22	10	30
PA11-13.5-?	13.5	25	12	31
PA11-16-?	16	26	14	31
PA11-21-?	21	33	18	35
PA11-29-?	29	44	25	42
PA11-36-?	36	55	34	48
PA11-48-?	48	70	44	50

### PB: (NPT-BSPT)

ORDER CODE	SIZE inch	D mm	E mm	L mm
PB11-1/2-?	1/2"	25	12	30
PB11-3/4-?	3/4"	30	18	35
PB11-1-?	1"	40	23	40
PB11-1 1/4-?	1 1/4"	50	28	42
PB11-1 1/2-?	1 1/2"	55	37	48
PB11-2-?	2"	70	45	51
PB11-2 1/2-?	2 1/2"	85	54	55
PB11-3-?	3"	105	70	64

### PC: (ISO METRIC)

ORDER CODE	SIZE mm	D mm	E mm	L mm
PC11-20-?	20	25	13	31
PC11-25-?	25	30	14	31
PC11-32-?	32	40	23	40
PC11-40-?	40	50	28	44
PC11-50-?	50	56	33	48
PC11-63-?	63	70	45	52
PC11-75-?	75	85	54	55



Connection Example

### 12- Cable Gland flat head

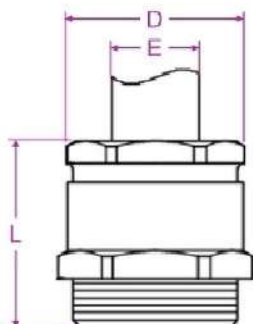
IP 54

**NOTE:**

1. (?) -> NB: Nickel-plated Brass

2.(A-C)-> A: PG

C: ISO METRIC



PA: (PG)

ORDER CODE	SIZE PG	D mm	E mm	L mm
PA12-11- ?	11	20	5-8	25
PA12-13.5- ?	13.5	22	6-10	25
PA12-16- ?	16	24	6-10	25
PA12-21- ?	21	30	10-16	30
PA12-29- ?	29	40	14-24	35
PA12-36- ?	36	52	28-32	40
PA12-48- ?	48	66	40-45	45

PC: (ISO METRIC)

ORDER CODE	SIZE mm	D mm	E mm	L mm
PC12-20- ?	20	24	12-14	28
PC12-25- ?	25	28	14-16	30
PC12-32- ?	32	38	20-26	32
PC12-40- ?	40	45	30-34	32
PC12-50- ?	50	55	36-42	35
PC12-63- ?	63	70	45	50
PC12-75- ?	75	90	60-66	65



Connection Example





**13- Armoured Cable Gland**



**NOTE:**

1. (?) -> **Metal-Brass BS2874 CZ121 Pb3**

2.(B-C)-> **B: NPT**

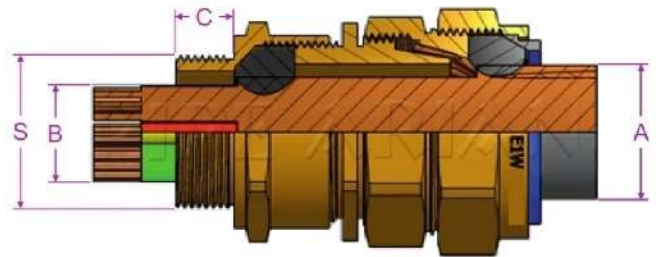
**C: ISO METRIC**

3. **Accessories: Matching Accessories available like PVC Shrouds, Lock Nuts, Earth Tag, Reducers, Adaptors, etc. as per the requirement.**



**PB: (NPT)**

ORDER CODE	SIZE inch	A mm	B mm	C mm
PB13-1/2-?	1/2"	20.5	14	15
PB13-3/4-?	3/4"	27.5	20.5	15
PB13-1-?	1"	33.5	26	15
PB13-1 1/4-?	1 1/4"	41	33	15
PB13-1 1/2-?	1 1/2"	53	44	15
PB13-2-?	2"	66	56	20
PB13-2 1/2-?	2 1/2"	78	68	20
PB13-3-?	3"	91	80	20



**PC: (ISO METRIC)**

ORDER CODE	SIZE mm	A mm	B mm	C mm
PC13-20-?	20	20.5	14	15
PC13-25-?	25	27.5	20.5	15
PC13-32-?	32	33.5	26	15
PC13-40-?	40	41	33	15
PC13-50-?	50	53	44	20
PC13-63-?	63	66	56	20
PC13-75-?	75	78	68	20
PC13-90-?	90	91	80	20
PC13-100-?	100	102	90	20



### 14- Reducers

**NOTE :**

1. (?) -> **MB: Metal-Brass**  
**NB: Nickel-plated Brass**

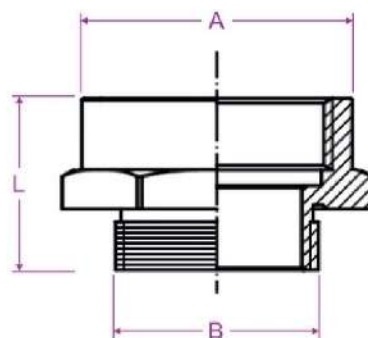
2. (A-B-C) -> **A: PG**  
**B: NPT**  
**C: ISO METRIC**



Nickel-plated Brass

**PA: (PG)**

ORDER CODE	A PG	B PG	L mm
PA14-13.5-11-?	13.5	11	16
PA14-16-11-?	16	11	16
PA14-16-13.5-?	16	13.5	16
PA14-21-11-?	21	11	20
PA14-21-13.5-?	21	13.5	20
PA14-21-16-?	21	16	20
PA14-29-13.5-?	29	13.5	22
PA14-29-16-?	29	16	22
PA14-29-21-?	29	21	22
PA14-36-16-?	36	16	25
PA14-36-21-?	36	21	25
PA14-36-29-?	36	29	25
PA14-48-21-?	48	21	27
PA14-48-29-?	48	29	27
PA14-48-36-?	48	36	27



**PB: (NPT)**

ORDER CODE	A inch	B inch	L mm
PB14-3/4-1/2-?	3/4"	1/2"	20
PB14-1-1/2-?	1"	1/2"	23
PB14-1-3/4-?	1"	3/4"	23
PB14-1 1/4-1/2-?	1 1/4"	1/2"	23
PB14-1 1/4-3/4-?	1 1/4"	3/4"	23
PB14-1 1/4-1-?	1 1/4"	1"	23
PB14-1 1/2-3/4-?	1 1/2"	3/4"	27
PB14-1 1/2-1-?	1 1/2"	1"	27
PB14-1 1/2-1 1/4-?	1 1/2"	1 1/4"	27
PB14-2-1-?	2"	1"	27
PB14-2-1 1/4-?	2"	1 1/4"	27
PB14-2-1 1/2-?	2"	1 1/2"	27
PB14-2 1/2-1 1/4-?	2 1/2"	1 1/4"	30
PB14-2 1/2-1 1/2-?	2 1/2"	1 1/2"	30
PB14-2 1/2-2-?	2 1/2"	2"	30
PB14-3-1 1/2-?	3"	1 1/2"	30
PB14-3-2-?	3"	2"	30
PB14-3-2 1/2-?	3"	2 1/2"	30



Metal-Brass



**PC: (ISO METRIC)**

ORDER CODE	A mm	B mm	L mm
PC14-25-20-?	25	20	20
PC14-32-20-?	32	20	23
PC14-32-25-?	32	25	23
PC14-40-20-?	40	20	23
PC14-40-25-?	40	25	23
PC14-40-32-?	40	32	27
PC14-50-25-?	50	25	27
PC14-50-32-?	50	32	27
PC14-50-40-?	50	40	27
PC14-63-32-?	63	32	27
PC14-63-40-?	63	40	27
PC14-63-50-?	63	50	27
PC14-75-40-?	75	40	30
PC14-75-50-?	75	50	30
PC14-75-63-?	75	63	30

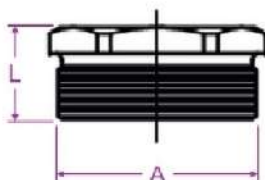


**15- Pressure screw (brass bushing)**

**NOTE :**

1. (?) --> **MB: Metal-Brass**  
**NB: Nickel-plated Brass**

2. (A) --> **A: PG**



Nickel-plated Brass

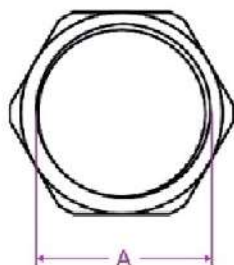
PA: (PG)

ORDER CODE	A PG	L mm
PA15-11- ?	11	15-20
PA15-13.5- ?	13.5	15-20
PA15-16- ?	16	15-20
PA15-21- ?	21	15-20
PA15-29- ?	29	15-20
PA15-36- ?	36	15-20
PA15-48- ?	48	15-20



Metal-Brass

**16- Locknut**



Metal-Brass



Nickel-plated Brass

**NOTE :**

1. (?) --> **MB: Metal-Brass**  
**NB: Nickel-plated Brass**

2. (A-B-C) --> **A: PG**  
**B: NPT**  
**C: ISO METRIC**

PA: (PG)

ORDER CODE	A PG	L mm
PA16-11- ?	11	3.5
PA16-13.5- ?	13.5	3.5
PA16-16- ?	16	3.5
PA16-21- ?	21	3.5
PA16-29- ?	29	4
PA16-36- ?	36	5
PA16-48- ?	48	5

PB: (NPT)

ORDER CODE	A inch	L mm
PB16-1/2- ?	1/2"	3.5
PB16-3/4- ?	3/4"	4
PB16-1- ?	1"	4
PB16-1 1/4- ?	1 1/4"	4.5
PB16-1 1/2- ?	1 1/2"	4.5
PB16-2- ?	2"	5
PB16-2 1/2- ?	2 1/2"	5.5
PB16-3- ?	3"	6

PC: (ISO METRIC)

ORDER CODE	A mm	L mm
PC16-20- ?	20	3
PC16-25- ?	25	3
PC16-32- ?	32	3.5
PC16-40- ?	40	3.5
PC16-50- ?	50	4.5
PC16-63- ?	63	5.5
PC16-75- ?	75	6
PC16-90- ?	90	6.5
PC16-100- ?	100	7

### 17- Condulets

**NOTE :**

1. (?) -> **C: Clear-Straight**  
**LB: Leaning Back**  
**LR: Leaning Right**  
**LL: Leaning Left**  
**T: Triode**  
**X: Intersection**

2. (A-B-C) -> **A: PG**  
**B: NPT**  
**C: ISO METRIC**

3. Material: Aluminium

#### PA: (PG)

ORDER CODE	SIZE PG
PA17-11-?	11
PA17-13.5-?	13.5
PA17-16-?	16
PA17-21-?	21
PA17-29-?	29
PA17-36-?	36
PA17-48-?	48



C



LB



LR



LL

#### PB: (NPT-BSPT)

ORDER CODE	SIZE inch
PB17-1/2-?	1/2"
PB17-3/4-?	3/4"
PB17-1-?	1"
PB17-1 1/4-?	1 1/4"
PB17-1 1/2-?	1 1/2"
PB17-2-?	2"
PB17-2 1/2-?	2 1/2"
PB17-3-?	3"
PB17-4-?	4"
PB17-5-?	5"



T



X

#### PC: (ISO METRIC)

ORDER CODE	SIZE mm
PC17-20-?	20
PC17-25-?	25
PC17-32-?	32
PC17-40-?	40
PC17-50-?	50
PC17-63-?	63



Connection Example



# ARSINI®

کل جریان با ما



[www.barghzoom.com](http://www.barghzoom.com)

